

Manually Add Wireless on Windows 10

Windows 10 and Tech Wi-Fi do not get along—the underlying problem is an issue with Windows 10 itself, not our configuration. For this reason, you often have to manually add an encrypted network to Windows 10 computers in order to get internet access. Sometimes you will have been able to connect before but are no longer able to; other times you might have never been able to connect to the Wi-Fi. In this case, we will deauthenticate from or forget the NMT-ENCRYPTED-WPA-WPA2 and then reconnect to it manually.

Table of Contents

Forget the “old” wireless network.....	2
Add the “new” network.....	5

Forget the “old” wireless network

Before adding in the wireless network, you will probably need to make the computer forget it. This is also known as deauthenticating and can help if you have been able to connect to the Wi-Fi before but are no longer able to. Deauthenticating will clear out any old credentials or settings that the network had previously.

First, press the little wave signal near the bottom right of the screen.



You're not connected

And the web just isn't the same without you.

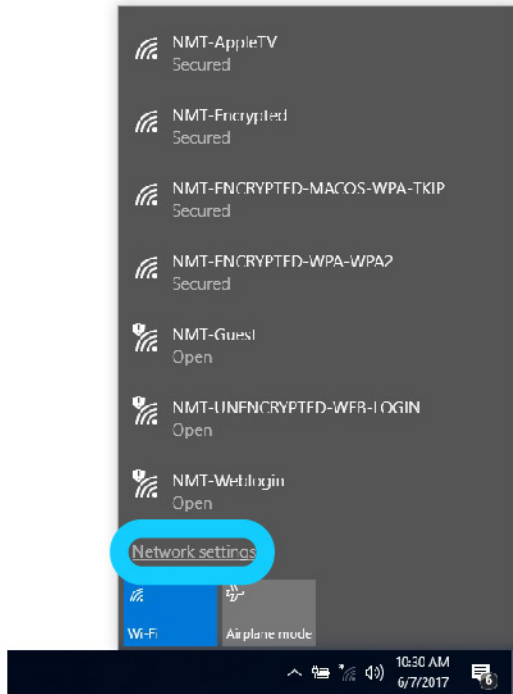
Let's get you back online

- Check that your network cables are plugged in.
- Make sure you're not in airplane mode.
- See if your wireless switch is turned on.
- Restart your router.

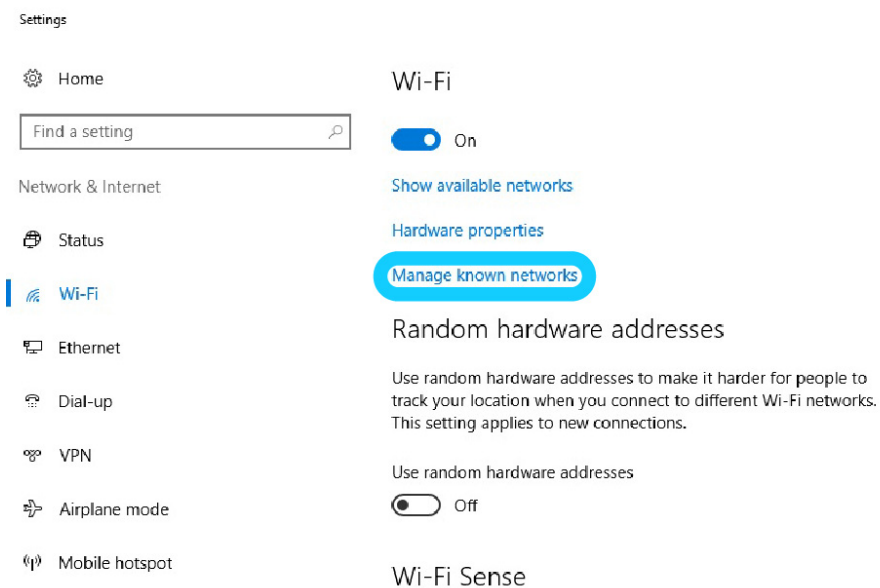
Help me fix it



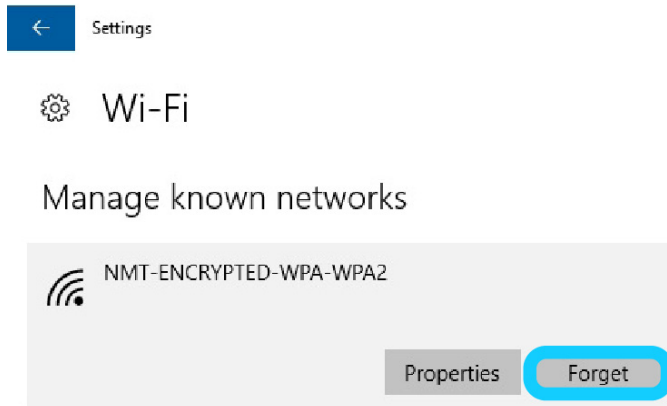
This will open up a list of Wi-Fi networks and an option to go to *Network settings* (note that this is a different set of settings than the *Network and Sharing Center* settings, which will be discussed later). Click on *Network settings*.



This will take you to the Network settings page, which includes a list of options for managing Wi-Fi. Click on *Manage known networks*.



Now you can list a list of all known Wi-Fi networks. **If no networks appear there, you can skip directly to manually adding the network.** In this case, we will forget the NMT-ENCRYPTED-WPA-WPA2 and reconnect to it manually. Right click on it and hit *Forget*. Now you can re-add it, manually.

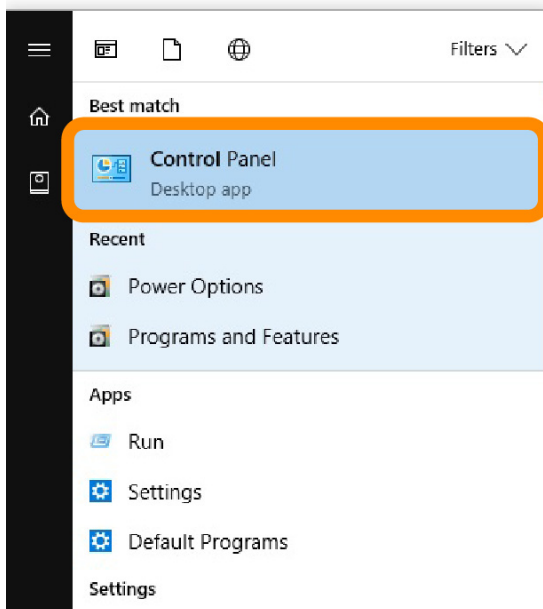


Add the “new” network

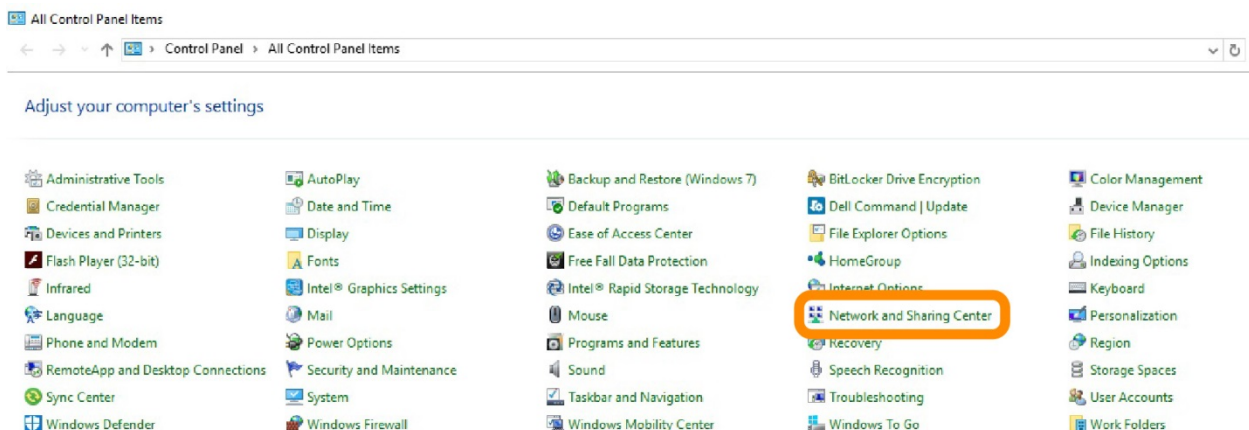
Open up the Control Panel (you can start typing *Control Panel* in the search box at the bottom of the screen and it should come up).



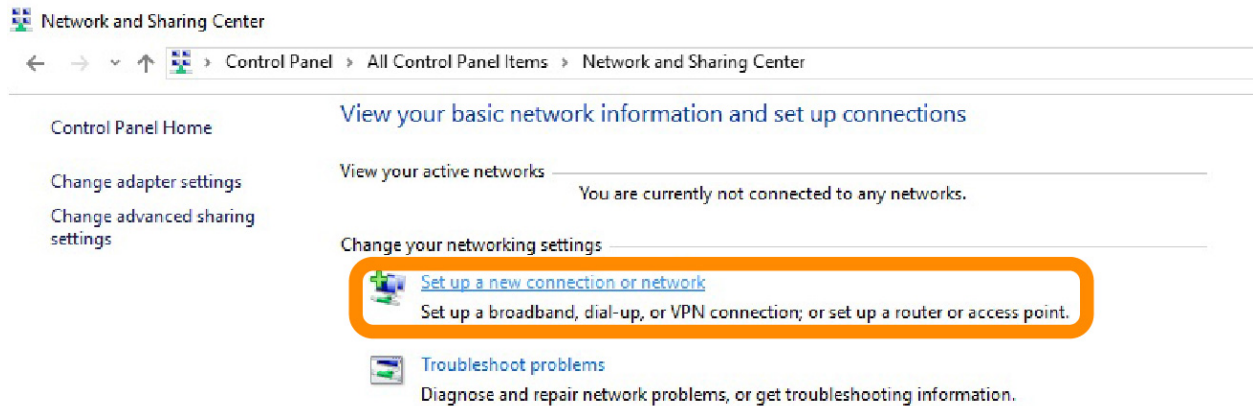
Click on *Control Panel*.



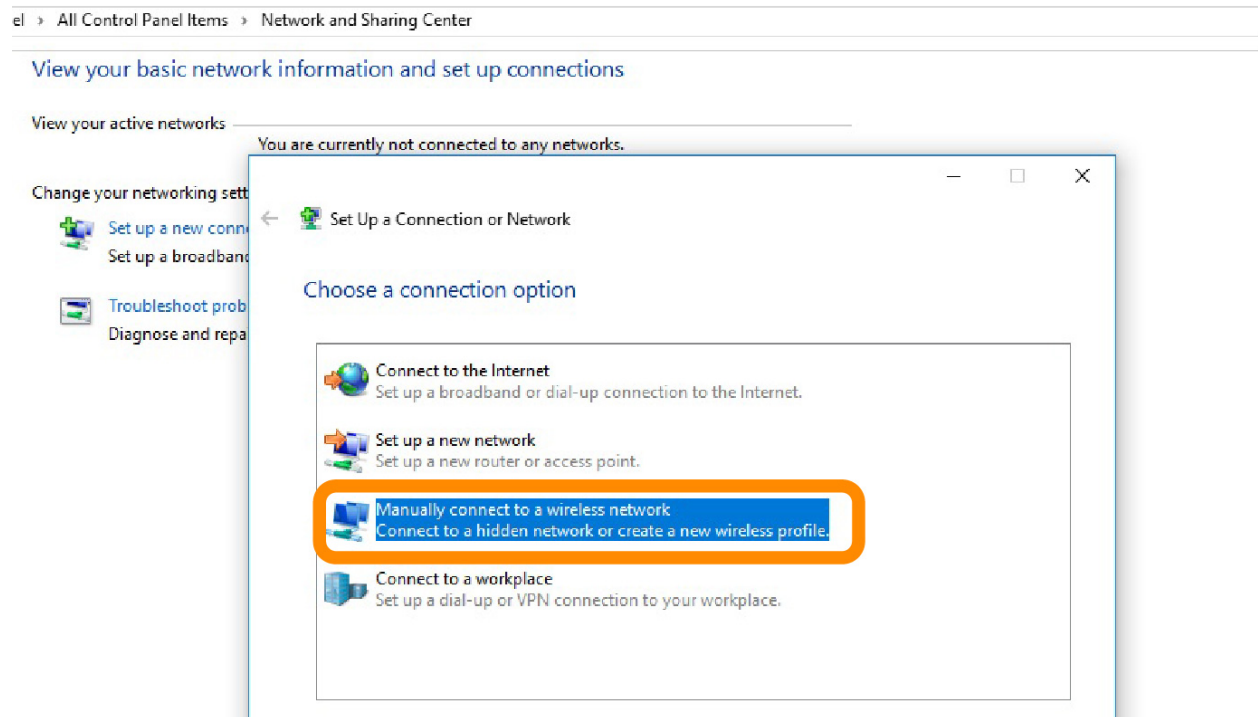
You will see a huge number of Control Panel options. Find *Network and Sharing Center* (middle of 2nd column to the left) and click on that.



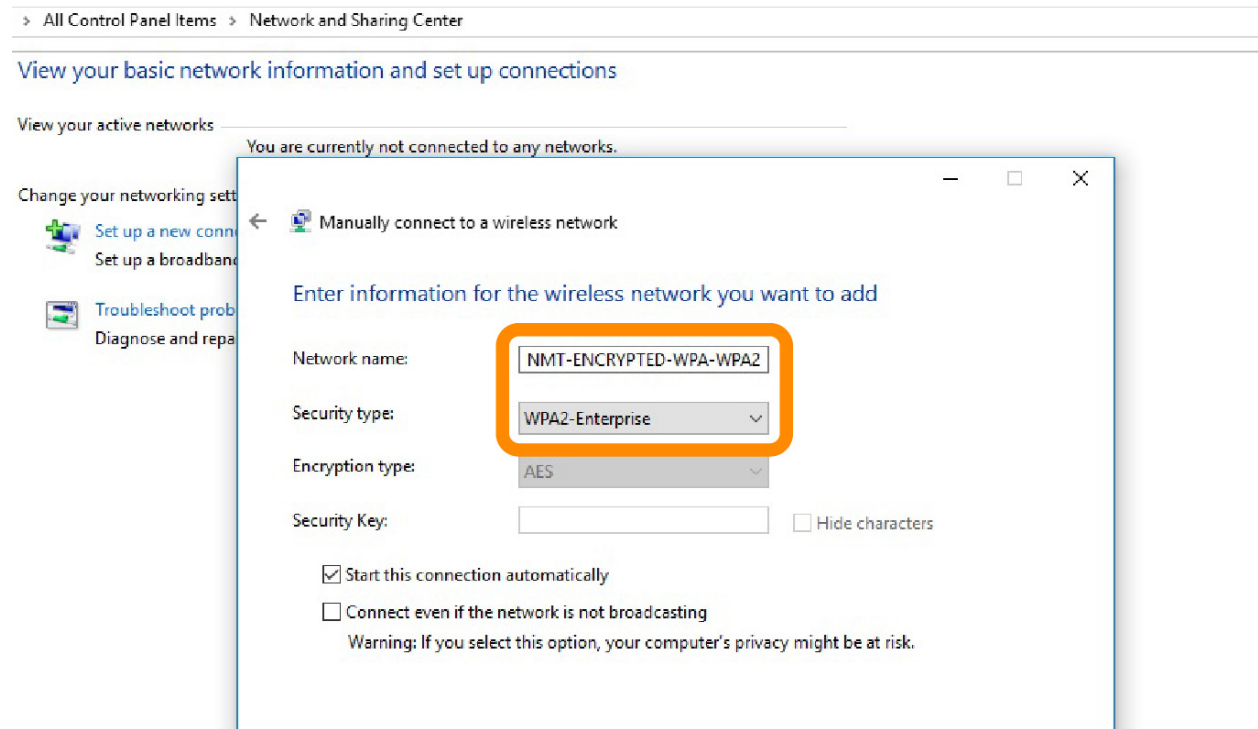
Then click *Set up a new connection or network*.



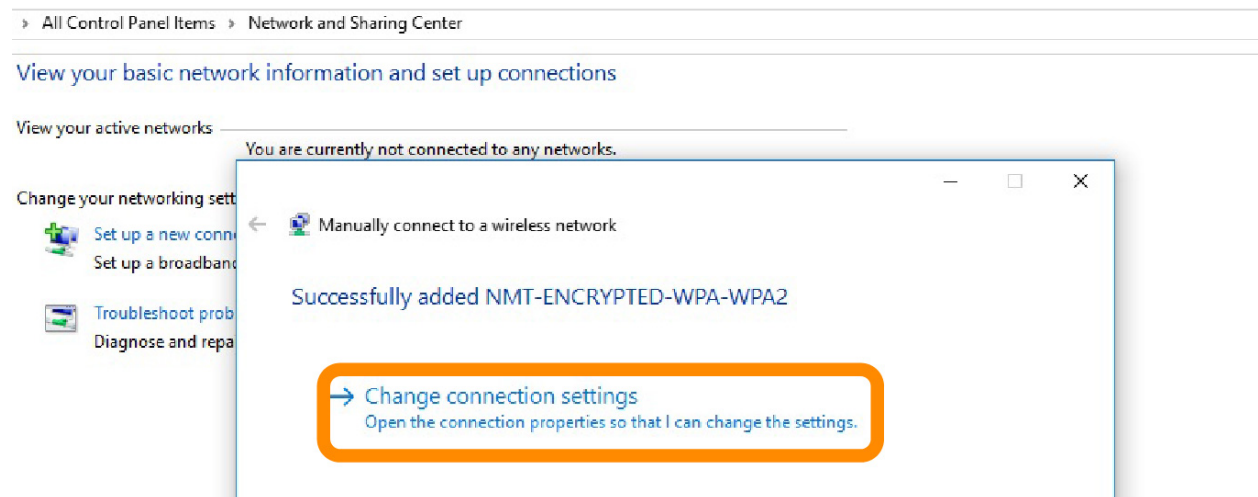
Manually connect to a wireless network.



And enter in the Wi-Fi info. The network name is *NMT-ENCRYPTED-WPA-WPA2*. The security type is *WPA2-Enterprise*. Click *Ok*.



When the *Successfully added* page appears, click *Change connection settings*.



Go to *Security*.

> All Control Panel Items > Network and Sharing Center

View your basic network information and set up connections

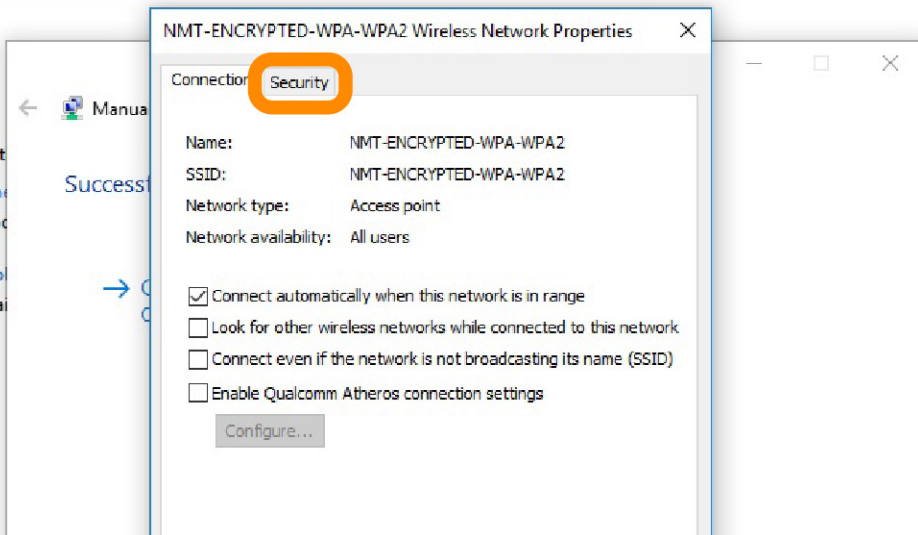
View your active networks

adm.nmt.edu
Public network

Change your networking settings

Set up a new connection
Set up a broadband connection

Troubleshoot problems
Diagnose and repair problems



And click on *Settings*.

> All Control Panel Items > Network and Sharing Center

View your basic network information and set up connections

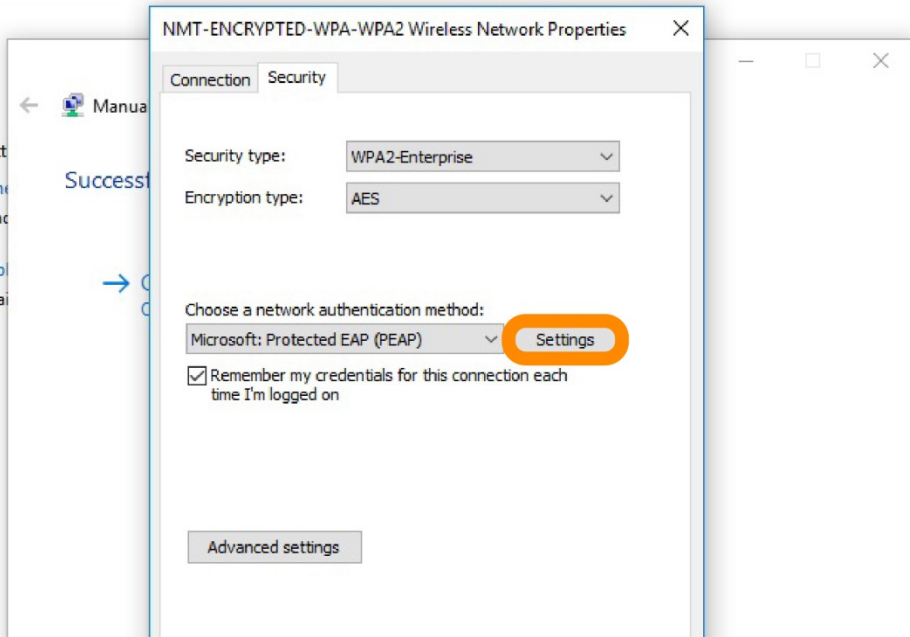
View your active networks

adm.nmt.edu
Public network

Change your networking settings

Set up a new connection
Set up a broadband connection

Troubleshoot problems
Diagnose and repair problems



You can now adjust the settings for the network authentication method. First, check the box labeled *Verify the server's identity by validating the certificate*. Then check the box labeled *Connect to these servers*. In the text box, type *radiusserve.nmt.edu*. Next, scroll down in the *Trusted Root Certification Authorities*: menu until you see *Thawte Premium Server CA*, *thawte primary root CA*, and *thawte primary root CA - G3*. Check all of these checkboxes and hit *Configure* near the bottom of the page.

> All Control Panel Items > Network and Sharing Center

View your basic network information and set up connections

View your active networks

You are currently not connected to any networks.

Change your networking settings


 [Set up a new connection or network](#)

Set up a broadband, dial-up, or VPN connection

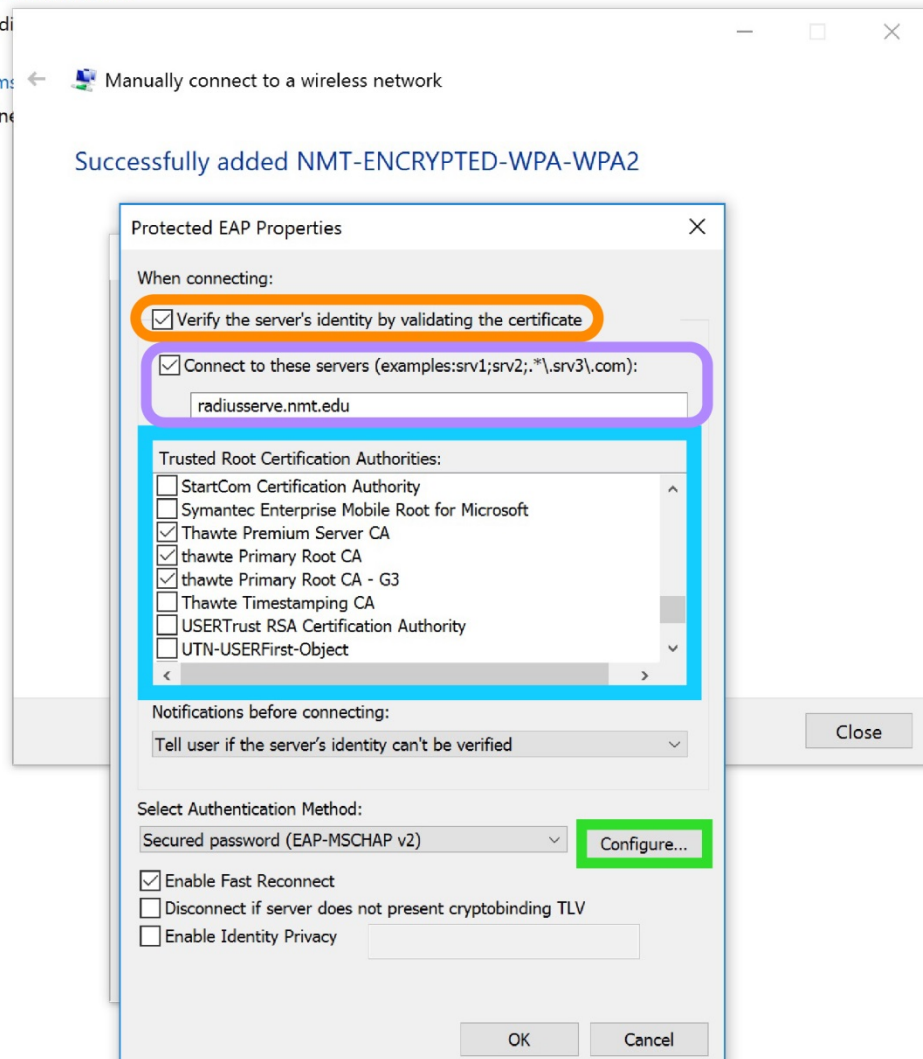


[Troubleshoot problems](#)

Diagnose and repair network problems

 [Manually connect to a wireless network](#)

Successfully added NMT-ENCRYPTED-WPA-WPA2



You will see a small window appear labeled *EAP MSCHAPv2 Properties*. Make sure the *Automatically use my Windows logon name and password* box is **not** checked. Click *OK*.

> All Control Panel Items > Network and Sharing Center

View your basic network information and set up connections

View your active networks

You are currently not connected to any networks.


Change your networking settings

 [Set up a new connection or network](#)

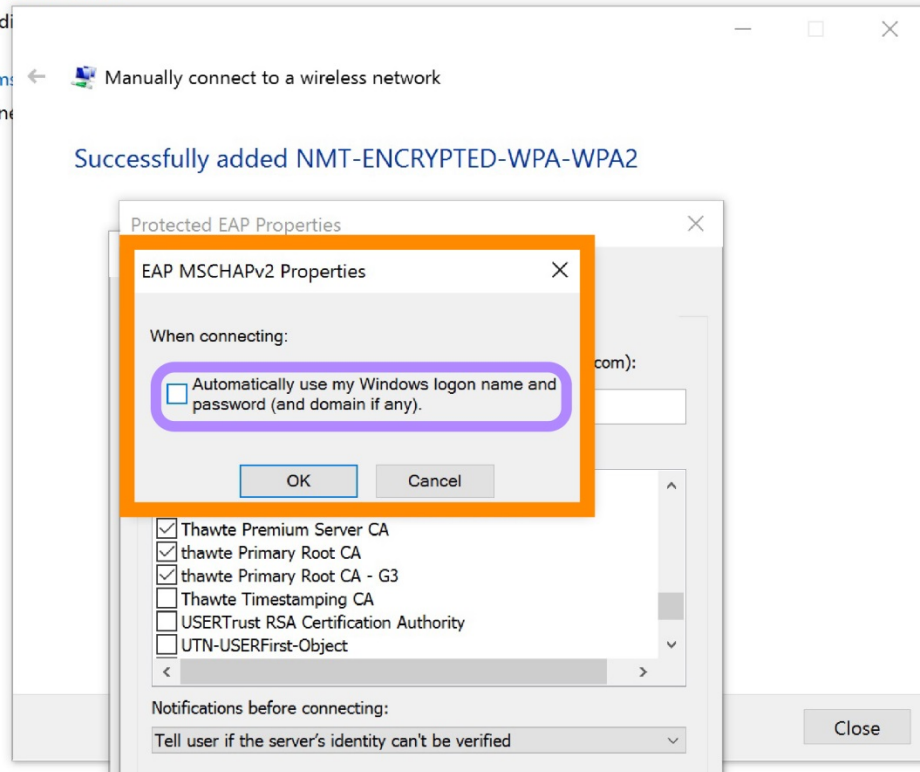
Set up a broadband, dial-up, or VPN connection

 [Troubleshoot problems](#)

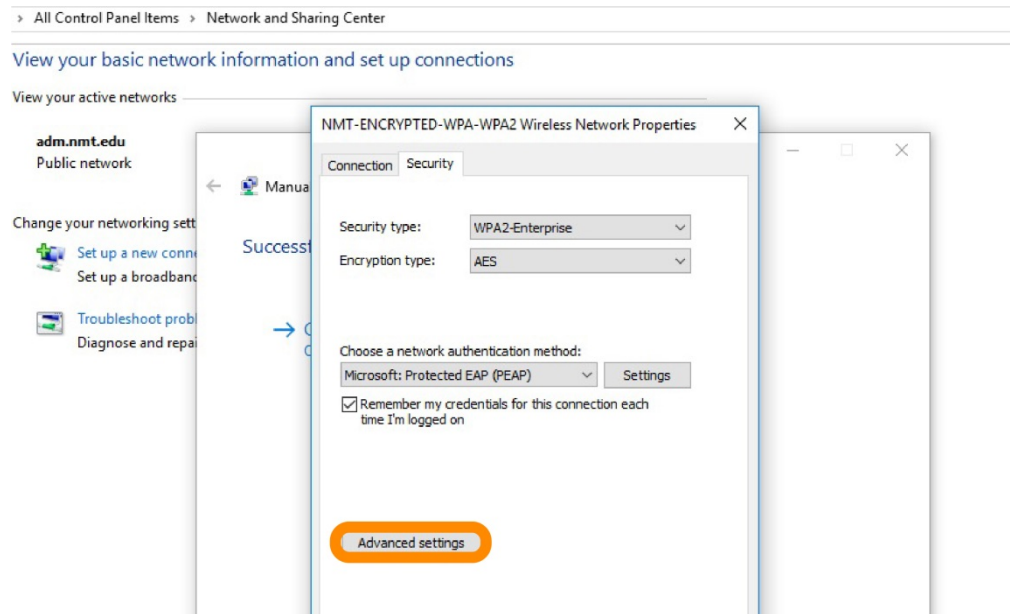
Diagnose and repair network problems

 [Manually connect to a wireless network](#)

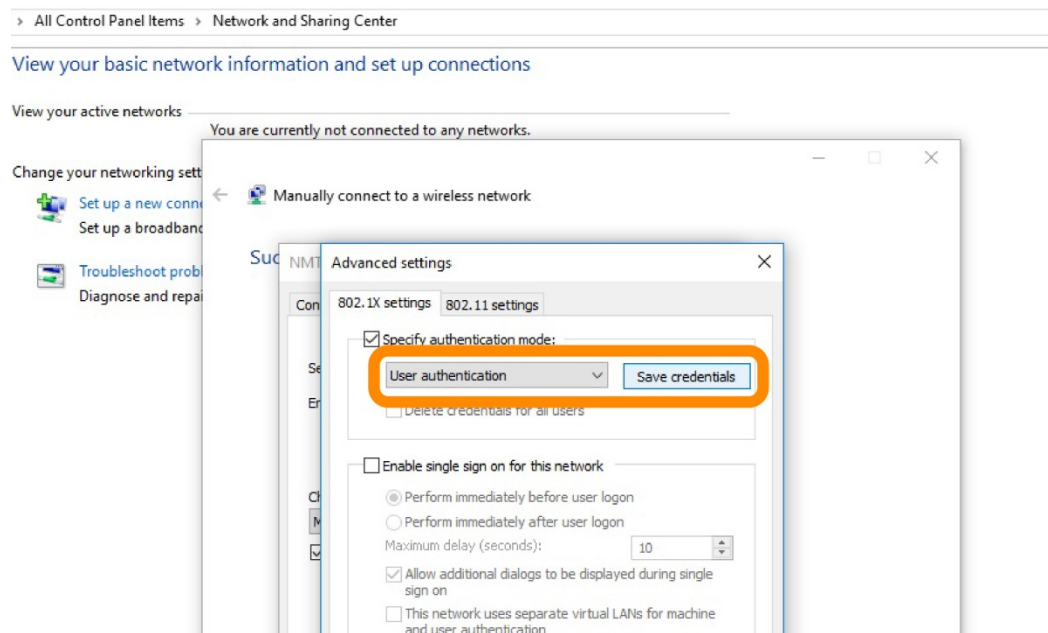
Successfully added NMT-ENCRYPTED-WPA-WPA2



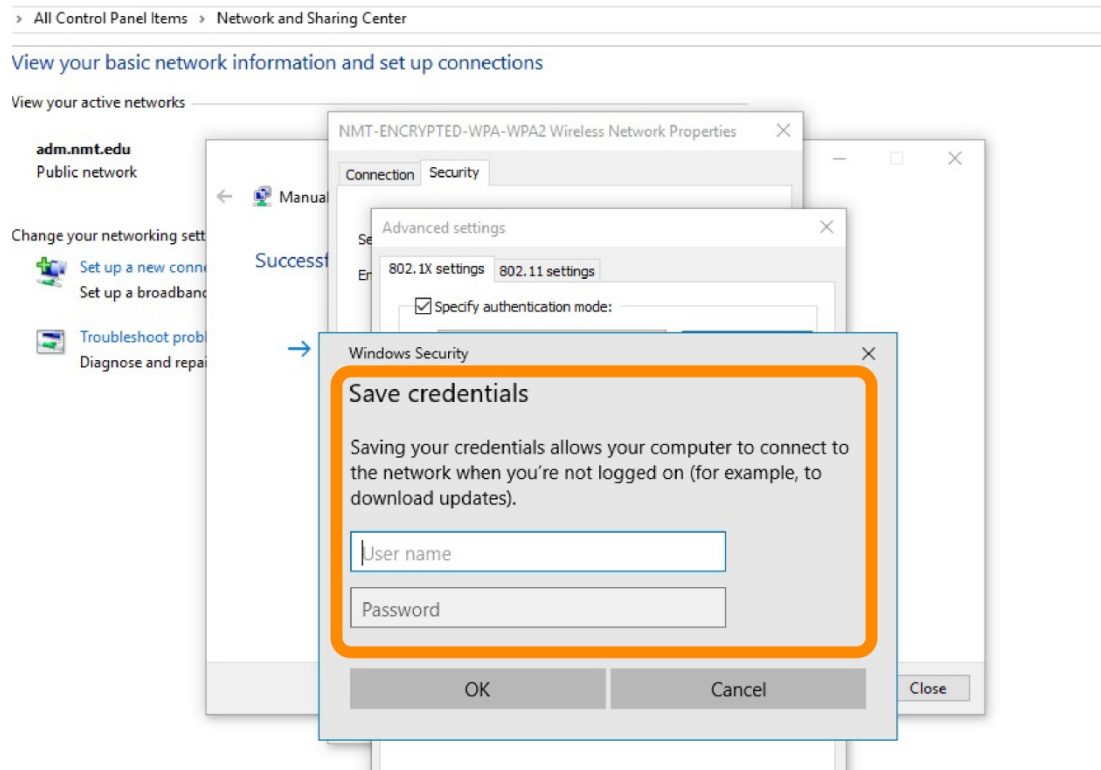
Now go back to the page with an overview of the Wireless Network Properties. This time, rather than clicking *Settings*, click *Advanced Settings*.



Specify the authentication mode as *User authentication* from the drop-down menu and click *Save credentials*.



Then save their 900# and Banweb password (Wi-Fi credentials) and click *OK*. This may need to be done multiple times in order for the credentials to take.



If it doesn't look like you can connect to Wi-Fi yet, click again on the little wave signal near the bottom right of the screen and find the NMT-ENCRYPTED-WPA-WPA2 network. If there is a warning about expecting to find NMT-ENCRYPTED-WPA-WPA2 in this location you can ignore it and click Connect.

