

Emergency access to bat study sites

From Tijeras

Location of work: Township 12 North, Range 07 East, Sections 20, 21, 28, 33

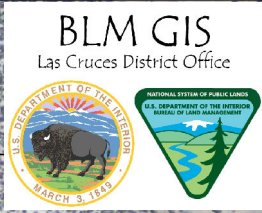
- Exit at Tijeras and head north on Highway 14 (Turquoise Trail) approximately 15.74 miles.
- Turn right on to 344 heading east approximately 8 tenths of a mile.
- Turn left into driveway and continue through the yard to access the gate to BLM managed land.

Second site

- Travel an additional 3 tenths of a mile east on 344.
- Turn right on the dirt road, at the recreational shooting area.

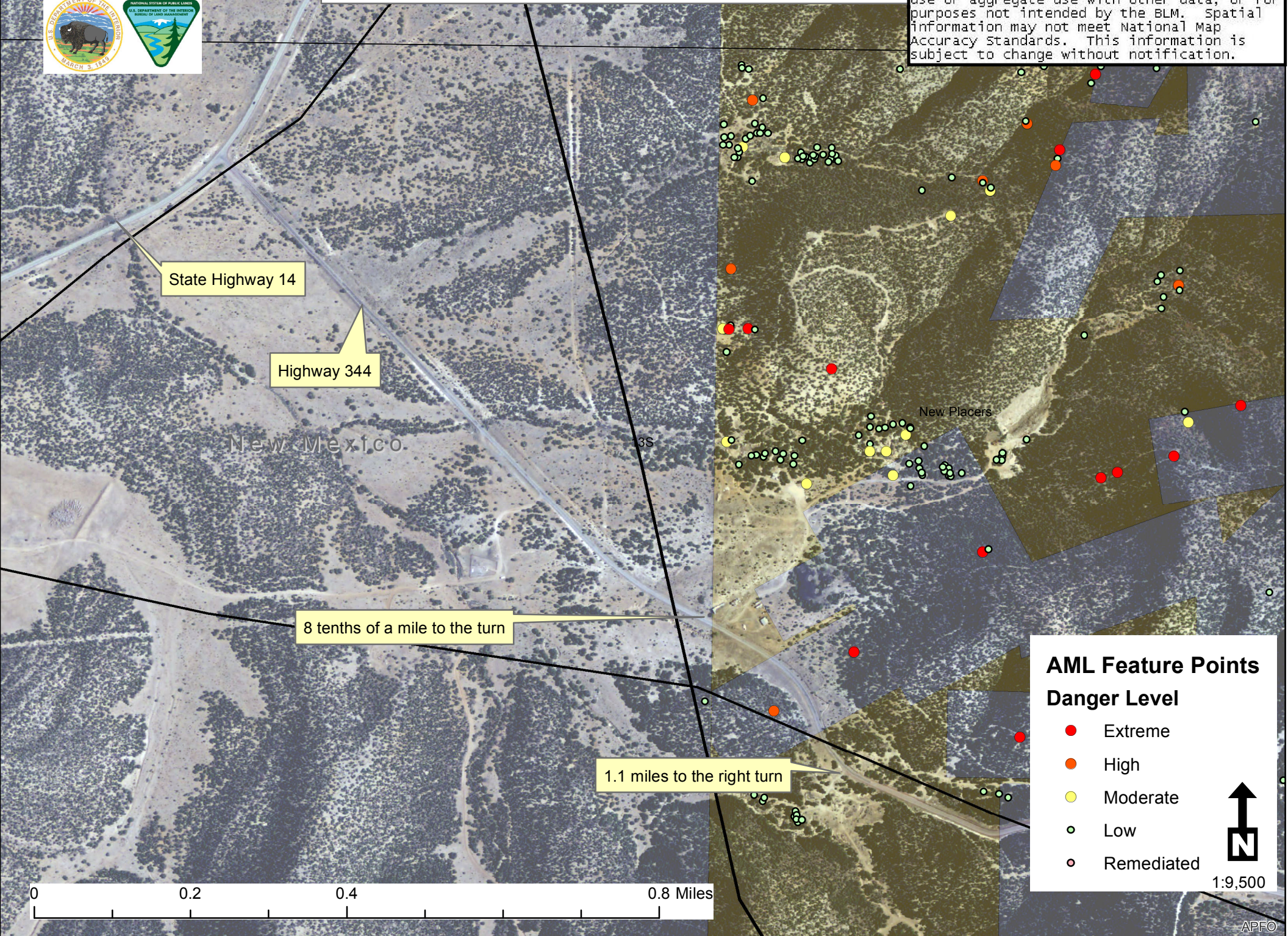
For more information:

Chris Teske
Abandoned Mine Land Coordinator
Bureau of Land Management
Phone: (575)525-4323
Cell: (575) 921-2367



Emergency Access to Bat Study Sites

No warranty is made by the Bureau of Land Management as to the accuracy, reliability, or completeness of these data for individual use or aggregate use with other data, or for purposes not intended by the BLM. Spatial information may not meet National Map Accuracy Standards. This information is subject to change without notification.



State Highway 14

Highway 344

New Mexico

3S

New Placers

8 tenths of a mile to the turn

1.1 miles to the right turn

0 0.2 0.4 0.8 Miles

AML Feature Points
Danger Level

- Extreme
- High
- Moderate
- Low
- Remediated

1:9,500

